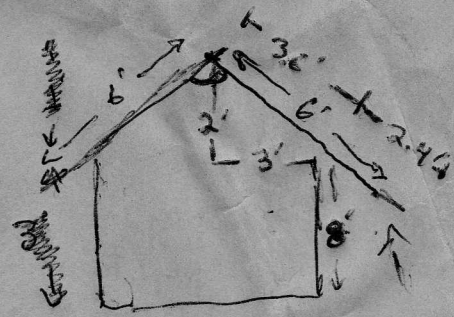
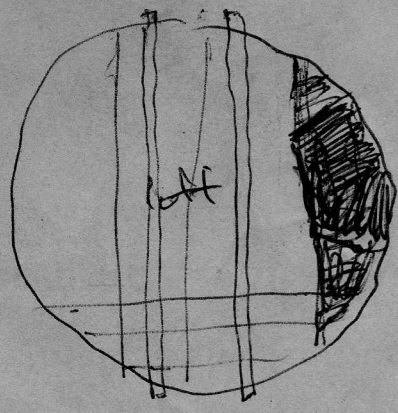
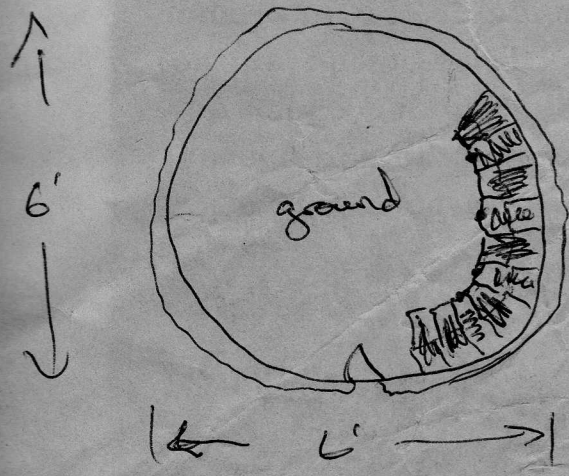


straw: 6-8 bales
 sand: 1 load (unc)



Wood: 8-6' raft beams
 3-8' floor joists
 8-12' 1x6 T+G (#2)
 25' of 1x4 strapping
 1/4 sq of shakes (27 sq ft)
 26' of handrail poles
 2' of railing
 1 staircase railing



cob staircase
 9 stairs @ 1/2' high
 1 1/2' wide

